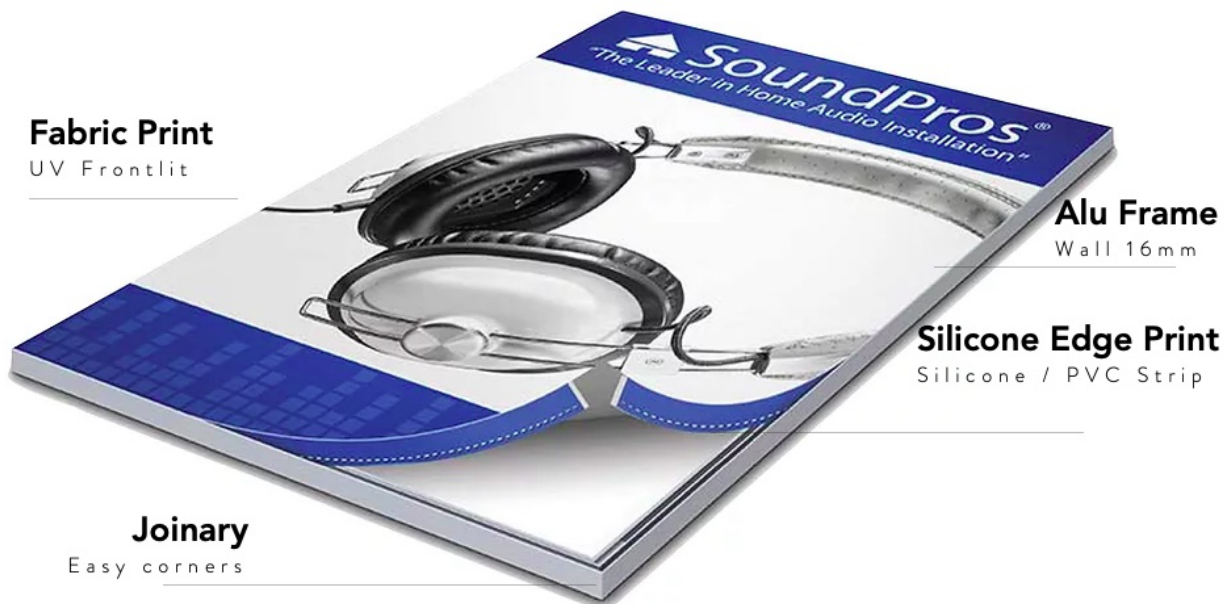


Wall Frame

16mm

WALL MOUNTED | NON-LIT | FABRIC
PRINT |

Wall frame 16mm nonlit frame is the most simple yet elegant for a non-lit frame application. This profile is used for user-friendly assembly. The textile print can stretch slightly enough to fit perfectly without any wrinkles.



Product Specifications

Profile Name	Wall Frame 16mm
Finish	Silver Anodised / Black/ white powder coating. Can be customised to RAL Colour
Fabric/Textile	PU coated Polyester Frontlet Fabric 160GSM with Silicone/PVC strip
Printing	UV Roll-to-Roll / Hybrid printer upto 10 feet
Lighting	Not recommended
Print Size Limit	5m or less on any side



Website : www.nsenterprises.in
Mail : n.s.enterprises2012@gmail.com

Mob: +91-9004282786
+91-9322447403



Website : www.nsenterprises.in
Mail : n.s.enterprises2012@gmail.com

Mob: +91-9004282786
+91-9322447403

Wall Lite Frame

50mm

WALL MOUNTED | BACKLIT | FABRIC
PRINT | UPTO 20SQ.FT FRAME

For a small sized wall mount backlit frame, Wall Lite 50mm is an ideal frame. The frame is barely noticeable and is perfect for a bright uniform LED lighting. With the vibrant UV prints, the graphics will come to life. Typically, sizes like 2'X2', 2'X3', 3'X4' and 4'X5' are recommended.



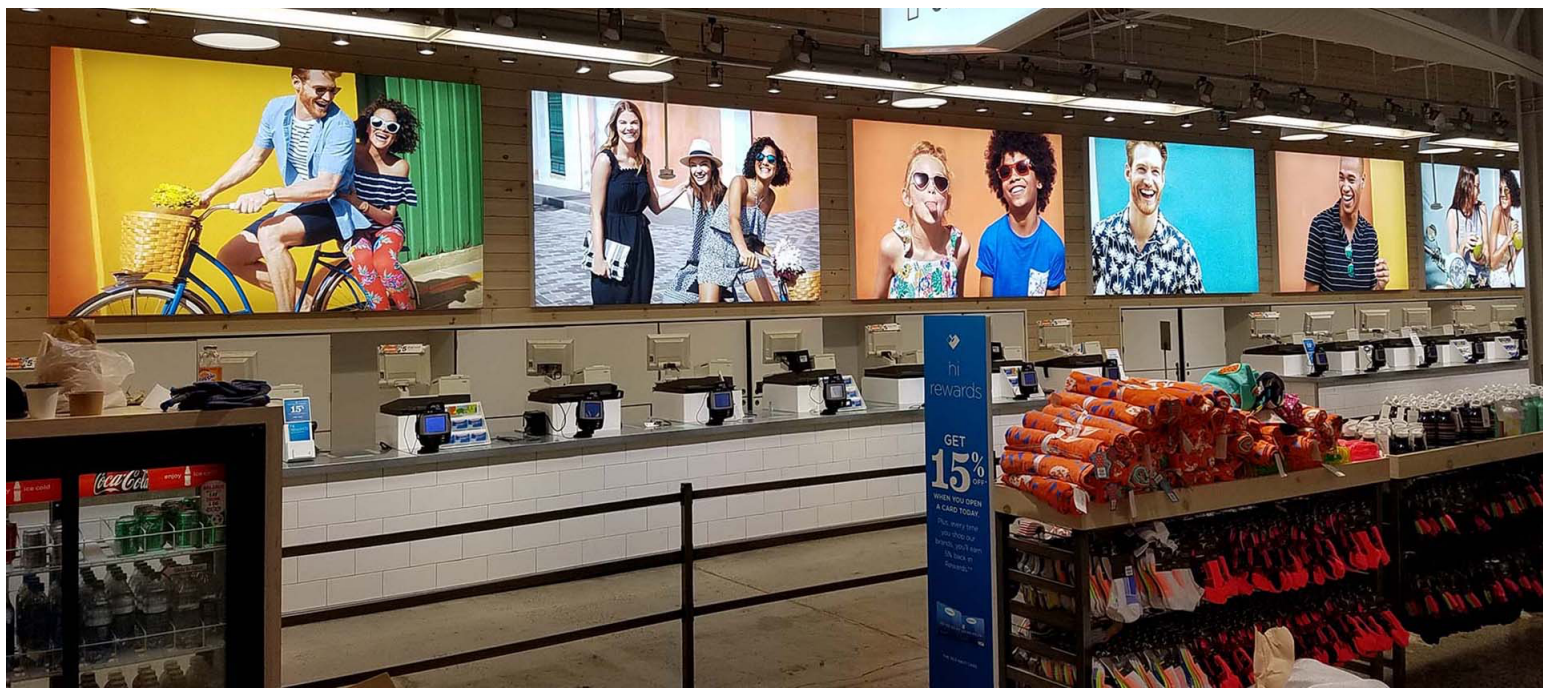
Product Specifications

Profile	Wall Lite Frame 50mm with 4 corner joinery
Finish	Silver Anodised / Black/ white powder coating. Can be customised to RAL Colour
Fabric/Textile	PU coated Polyester Backlit Fabric 160GSM with Silicone/PVC strip
Printing	UV printing Roll-to-Roll / Hybrid printer upto 10 feet - Backlit Profile
LEDs / Driver / SMPS	Rigidbars on back ACP sheet / SMPS 100W,150W, 200W, 300W
Warranty	2 year warranty
Input / Output Voltage	240 VAC / 12V DC output from SMPS
Power Consumption	10-13W / sq.ft
Brightness	Lux Range - 1000-1100 @ print surface



Website : www.nsenterprises.in
Mail : n.s.enterprises2012@gmail.com

Mob: +91-9004282786
+91-9322447403



Wall Lite Frame

75mm

WALL MOUNTED | BACKLIT | FABRIC
PRINT | UPTO 40 SQ.FT FRAME

Wall Lite frame 75mm is perfectly suitable for a medium sized wall mount backlit box. It is a strong , stable and sturdy profile. The extra depth in the frame helps to give a proportionate look compared to the frame area. Recommended sizes for this frames are 3'x7', 4'x6', 4'x8' and 5'x8'



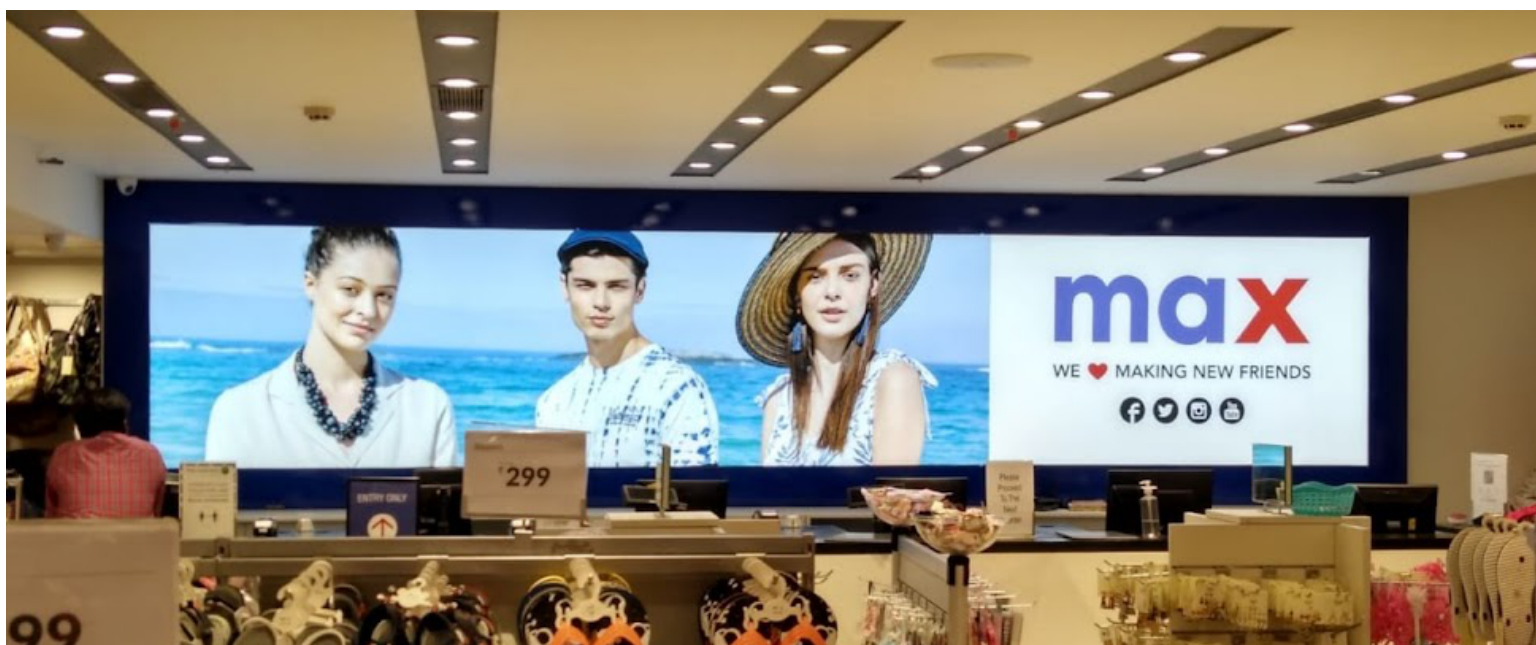
Product Specifications

Profile	Wall Lite Frame 75mm with 8 corner joinery
Finish	Silver Anodised / Black/ white powder coating. Can be customised to RAL Colour
Fabric/Textile	PU coated Polyester Backlit Fabric 160GSM with Silicone/PVC strip
Printing	UV printing Roll-to-Roll / Hybrid printer upto 10 feet - Backlit Profile
LEDs / Driver / SMPS	Rigidbars on back ACP sheet, SMPS - 100W,150W, 200W, 300W
Warranty	2 year warranty
Input / Output Voltage	240 VAC / 12V DC output from SMPS
Power Consumption	10-13W / sq.ft
Brightness	Lux Range - 1000-1100 @ print surface



Website : www.nsenterprises.in
Mail : n.s.enterprises2012@gmail.com

Mob: +91-9004282786
+91-9322447403



Website : www.nsenterprises.in
Mail : n.s.enterprises2012@gmail.com

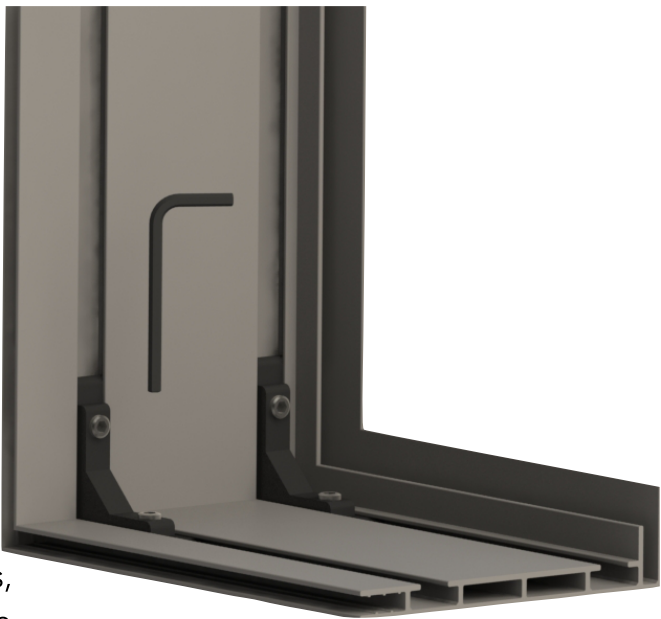
Mob: +91-9004282786
+91-9322447403

Wall Lite Frame

100mm

WALL MOUNTED | BACKLIT | FABRIC
PRINT | UPTO 100 SQ.FT FRAME

For sizes upto 100 sq.ft, it is recommended to use thicker profile for the frame to look proportionate and evenly lite. Wall-Tex 100 is the most suitable frame to use in this case. With two joinary grooves at the corners, it gives perfect 90 degree corners. Recommended sizes are 5'X10', 6'X10', 8'X8', 8'X10' and 10'X10'



Product Specifications

Profile	Wall Lite Frame 100mm with 8 corner joinery
Finish	Silver Anodised / Black/ white powder coating. Can be customised to RAL Colour
Fabric/Textile	PU coated Polyester Backlit Fabric 160GSM with Silicone/PVC strip
Printing	UV printing Roll-to-Roll / Hybrid printer upto 10 feet - Backlit Profile
LEDs / Driver / SMPS	Rigidbars on back ACP sheet, SMPS - 100W,150W, 200W, 300W
Warranty	2 year warranty
Input / Output Voltage	240 VAC / 12V DC output from SMPS
Power Consumption	10-13W / sq.ft
Brightness	Lux Range - 1000-1100 @ print surface



Website : www.nsenterprises.in
Mail : n.s.enterprises2012@gmail.com

Mob: +91-9004282786
+91-9322447403

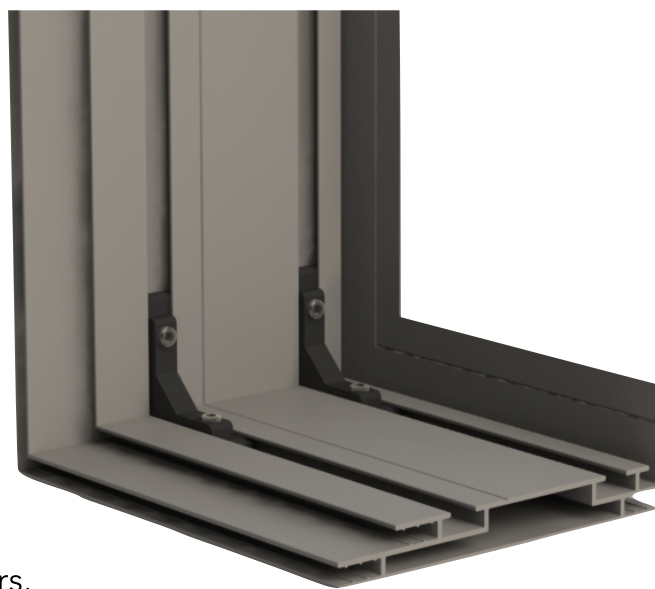


Wall Lite Frame

120mm

WALL MOUNTED | BACKLIT | FABRIC
PRINT | ABOVE 100 SQ.FT FRAME

For sizes upto 100 sq.ft, it is recommended to use thicker profile for the frame to look proportionate and evenly lite. Wall-Tex 100 is the most suitable frame to use in this case. With two joinary grooves at the corners, it gives perfect 90 degree corners. Recommended sizes are 5'X10', 6'X10', 8'X8', 8'X10' and 10'X10'



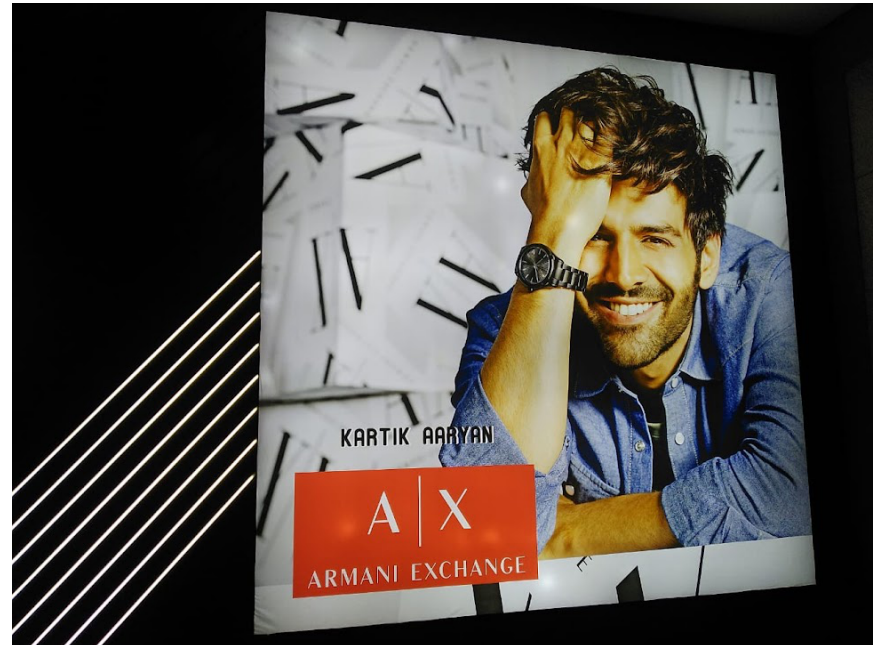
Product Specifications

Profile	Wall Lite Frame 120mm with 8 corner joinery
Finish	Silver Anodised / Black/ white powder coating. Can be customised to RAL Colour
Fabric/Textile	PU coated Polyester Backlit Fabric 160GSM with Silicone/PVC strip
Printing	UV printing Roll-to-Roll / Hybrid printer upto 10 feet - Backlit Profile
LEDs / Driver / SMPS	Rigidbars on back ACP sheet, SMPS - 100W,150W, 200W, 300W
Warranty	2 year warranty
Input / Output Voltage	240 VAC / 12V DC output from SMPS
Power Consumption	10-13W / sq.ft
Brightness	Lux Range - 1000-1100 @ print surface



Website : www.nsenterprises.in
Mail : n.s.enterprises2012@gmail.com

Mob: +91-9004282786
+91-9322447403

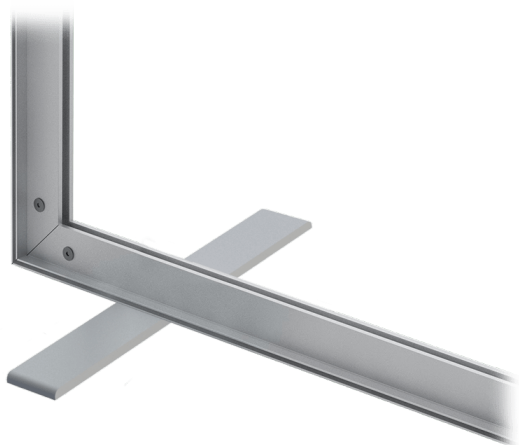


T Frame (Non-lit)

50mm - Single/ Both side FSU

SELF-STANDING | NON-LIT | FABRIC
PRINT | SINGLE & BOTH SIDE

This is best suited for a self standing banner with high quality frontlit print. T-Frame 50 is the ideal choice. The fabric can be mounted on one side or on both sides (front and back) of the frame. It is extremely user-friendly to assemble and dismantle on-site and can be carried in the truck of the car. The two feet provides the strength and stability to the frame.



U- Base
400mm X 100mm X 5mm

Flat Base
400mm X 100mm X 5mm



Product Specifications

Profile	T Frame 50mm (New / Old) with 4 corner Joinaries
Finish	Silver Anodised / Black/ white powder coating. Can be customised to RAL Colour
Fabric/Textile	PU coated Polyester Frontlet Fabric 160GSM with Silicone/PVC strip
Printing	UV printing Roll-to-Roll / Hybrid printer upto 10 feet - Frontlit Profile
Warranty	2 year warranty
Single / Both Side	Single side and both side options available in the same frame.



Website : www.nsenterprises.in
Mail : n.s.enterprises2012@gmail.com

Mob: +91-9004282786
+91-9322447403



Website : www.nsenterprises.in
Mail : n.s.enterprises2012@gmail.com

Mob: +91-9004282786
+91-9322447403

Single Side Backlit FSU

75mm / 100mm

SELF-STANDING | BACKLIT | FABRIC
PRINT | SINGLE SIDE

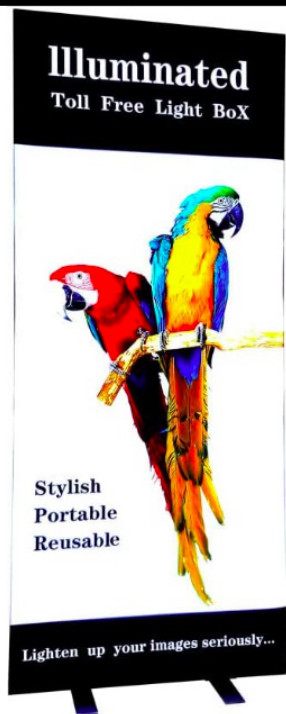
Wall Tex 75 and Wall Tex 100 both can be used to provide single side free standing backlit frames. Wan-Tex 75 can be used for a relatively smaller size whereas Wal-Tex 100 can be used for a large frame. Both profiles can hold ACP sheet on the back of the frame. This is to place LED modules or strips on the back of the frame. We offer two types of base as per client choice.



U- Base
400mm X 100mm X 5mm



Flat Base
400mm X 100mm X 5mm



Product Specifications

Profile	Wall Lite Frame 75mm / Wall Lite Frame 100mm
Finish	Silver Anodised / Black/ white powder coating. Can be customised to RAL Colour
Fabric/Textile	PU coated Polyester Backlit Fabric 160GSM with Silicone/PVC strip
Printing	UV printing Roll-to-Roll / Hybrid printer upto 10 feet - Backlit Profile
LEDs / Driver / SMPS	Rigidbars on back ACP sheet, SMPS - 100W,150W, 200W, 300W
Warranty	2 year warranty
Input / Output Voltage	240 VAC / 12V DC output from SMPS
Power Consumption	10-13W / sq.ft
Brightness	Lux Range - 1000-1100 @ print surface



Website : www.nsenterprises.in
Mail : n.s.enterprises2012@gmail.com

Mob: +91-9004282786
+91-9322447403

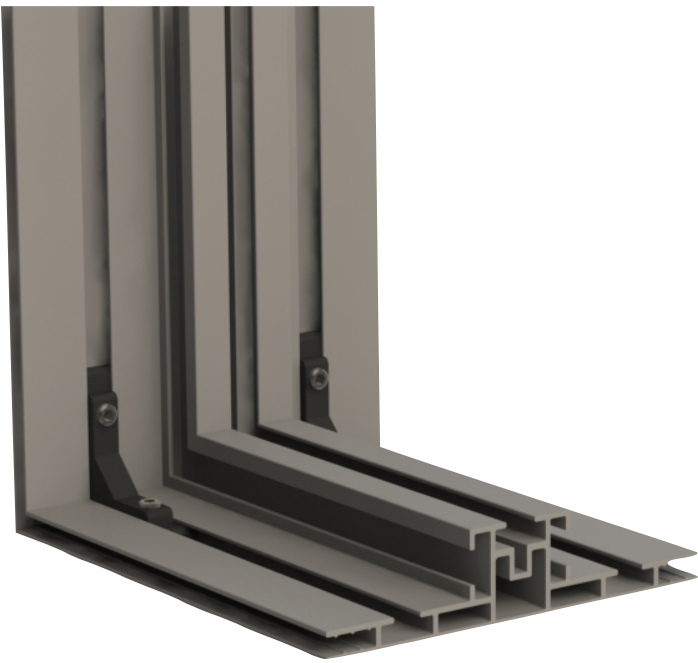


Both Side Backlit FSU

100mm / 120mm

SELF-STANDING | BACKLIT | FABRIC
PRINT | BOTH SIDE

Double-Tex 120 is a versatile profile used to make front and back sided free standing backlit frame. The profile can hold ACP sheet in the centre of the frame to fix LED lights. The same profile can also take Edge light strips for side lighting. We offer two types of base as per client choice.



U- Base
400mm X 100mm X 5mm



Flat Base
400mm X 100mm X 5mm

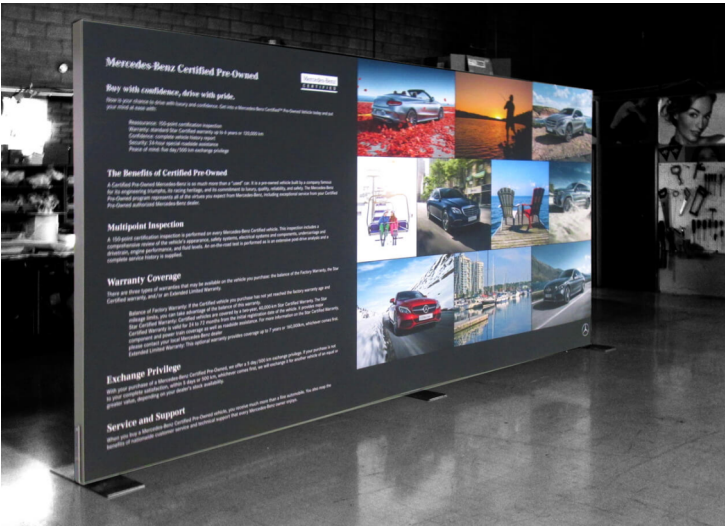
Product Specifications

Profile	DoubleTex 100mm / DoubleTex 120mm
Finish	Silver Anodised / Black/ white powder coating. Can be customised to RAL Colour
Fabric/Textile	PU coated Polyester BacklitFabric 160GSM with Silicone/PVC strip
Printing	UV printing Roll-to-Roll / Hybrid printer upto 10 feet - Backlit Profile
LEDs / Driver / SMPS	Edge LED bars on side profiles, SMPS - 100W,150W, 200W, 300W
Warranty	2 year warranty
Input / Output Voltage	240 VAC / 12V DC output from SMPS
Power Consumption	10-13W / sq.ft
Brightness	Lux Range - 800-900 @ print surface



Website : www.nsenterprises.in
Mail : n.s.enterprises2012@gmail.com

Mob: +91-9004282786
+91-9322447403



Website : www.nsenterprises.in
 Mail : n.s.enterprises2012@gmail.com

Mob: +91-9004282786
 +91-9322447403

Hanging Frame (Non-lit)

43mm Single / Both Side

HANGING | FRONTLIT | FABRIC

PRINT | BOTH SIDE

Suspension-Tex 43 is ideal to hang single or double side non-lit textile frames. The frame is fixed with hooks on top of the frame with steel wire ropes used for suspension.



Product Specifications

Profile	T Frame 50mm / Suspension 43mm (New / Old) with 4 corner Joinaries
Finish	Silver Anodised / Black/ white powder coating. Can be customised to RAL Colour
Fabric/Textile	PU coated Polyester Frontlet Fabric 160GSM with Silicone/PVC strip
Printing	UV printing Roll-to-Roll / Hybrid printer upto 10 feet - Frontlit Profile
Warranty	2 year warranty
Single / Both Side	Single side and both side options available in the same frame.



Website : www.nsenterprises.in
Mail : n.s.enterprises2012@gmail.com

Mob: +91-9004282786
+91-9322447403



Website : www.nsenterprises.in
Mail : n.s.enterprises2012@gmail.com

Mob: +91-9004282786
+91-9322447403

Hanging Frame (Backlit)

75mm/ 100mm Single side

HANGING | BACKLIT | FABRIC PRINT |
SINGLE SIDE



For a single side hanging frame, wall lite frame 75mm / 100mm are the ideal frame to use. Both profiles have a single fabric groove in the front and ACP sheet backing. Depending on the area of the frame, we can choose the frame.



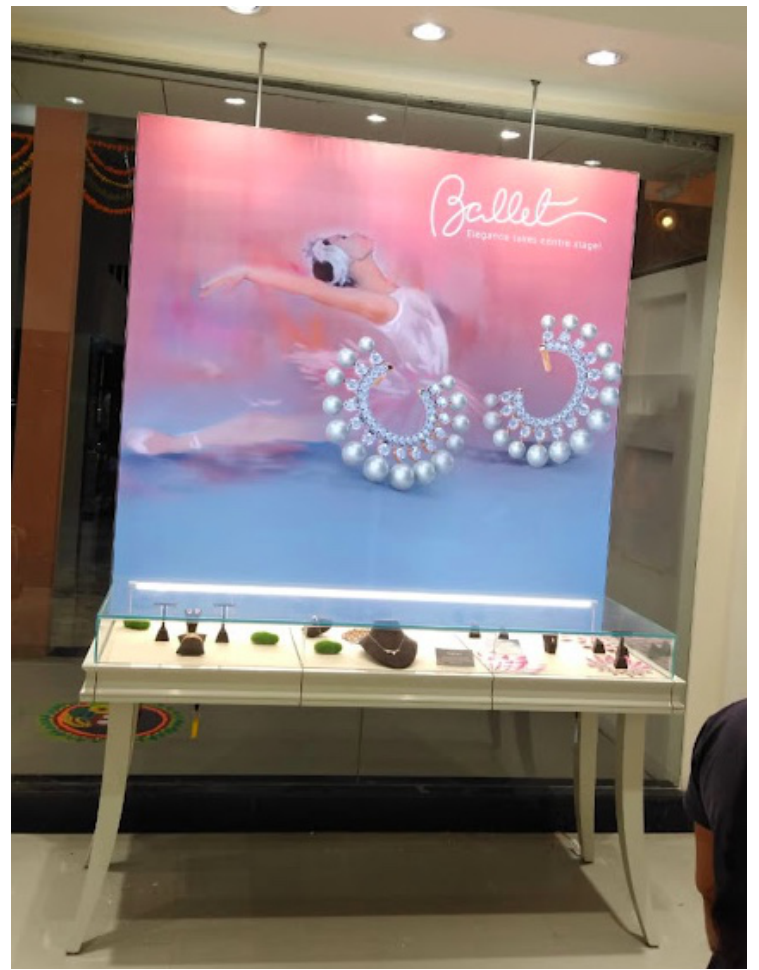
Product Specifications

Profile	Wall Lite 75mm (Medium size frame) / Wall Lite 100mm (Large side Frame)
Finish	Silver Anodised / Black/ white powder coating. Can be customised to RAL Colour
Fabric/Textile	PU coated Polyester BacklitFabric 160GSM with Silicone/PVC strip
Printing	UV printing Roll-to-Roll / Hybrid printer upto 10 feet - Backlit Profile
LEDs / Driver / SMPS	Edge LED bars on side profiles, SMPS - 100W,150W, 200W, 300W
Warranty	2 year warranty
Input / Output Voltage	240 VAC / 12V DC output from SMPS
Power Consumption	10-13W / sq.ft
Brightness	Lux Range - 800-900 @ print surface



Website : www.nsenterprises.in
Mail : n.s.enterprises2012@gmail.com

Mob: +91-9004282786
+91-9322447403

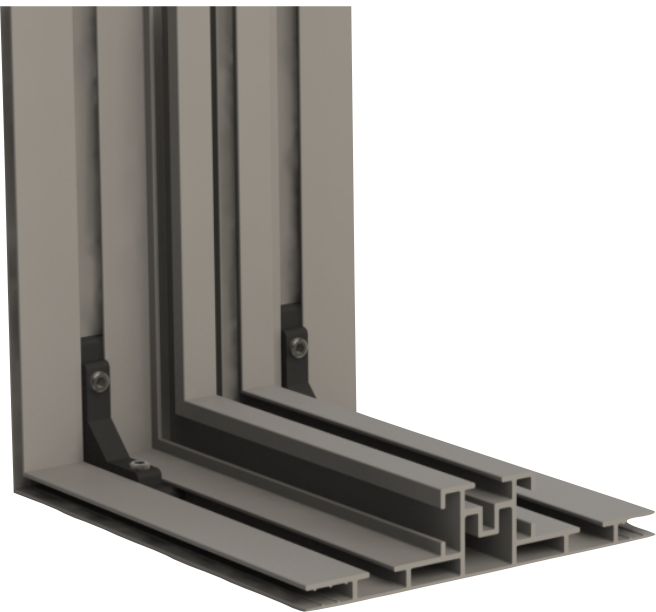


Hanging Frame (Backlit)

100mm/ 120mm Both side

HANGING | BACKLIT | FABRIC PRINT |
BOTH SIDE

For a double side hanging frame, Double-Tex 120/ 100mm is the ideal frame to use. Both profiles can hold backlit or edge lit systems Depending on the area of the frame, we can choose the frame.



Product Specifications

Profile	DoubleTex 100mm / DoubleTex 120mm
Finish	Silver Anodised / Black/ white powder coating. Can be customised to RAL Colour
Fabric/Textile	PU coated Polyester BacklitFabric 160GSM with Silicone/PVC strip
Printing	UV printing Roll-to-Roll / Hybrid printer upto 10 feet - Backlit Profile
LEDs / Driver / SMPS	Edge LED bars on side profiles, SMPS - 100W,150W, 200W, 300W
Warranty	2 year warranty
Input / Output Voltage	240 VAC / 12V DC output from SMPS
Power Consumption	10-13W / sq.ft
Brightness	Lux Range - 800-900 @ print surface



Website : www.nsenterprises.in
Mail : n.s.enterprises2012@gmail.com

Mob: +91-9004282786
+91-9322447403

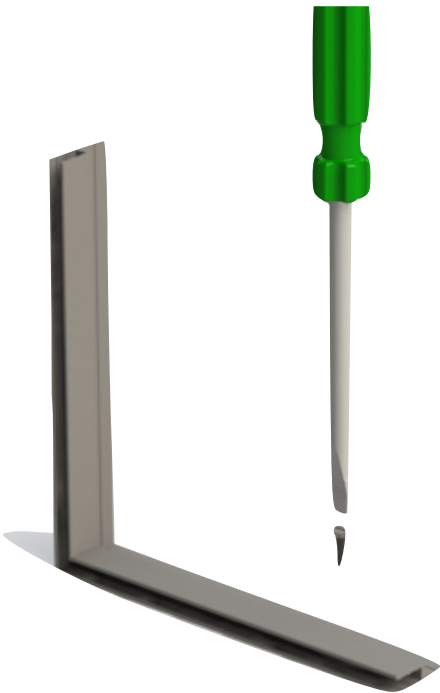


Niche Frame (Inlay)

h Frame or y Frame - 35mm

FRAME IDEAL FOR NICHE | BACKLIT |
FABRIC PRINT | SINGLE SIDE

h profile is the most simple and cost effective solution to place inside a pre-fabricated niche. It is screwed in the inner edges of the niche. A frontlit or backlit can be made from the same profile. As per the depth of the frame, LED module, tube or edge lights can be placed.



Product Specifications

Profile	Niche frame / y frame / h frame - 35mm
Finish	Silver Anodised / Black/ white powder coating. Can be customised to RAL Colour
Fabric/Textile	PU coated Polyester BacklitFabric 160GSM with Silicone/PVC strip
Printing	UV printing Roll-to-Roll / Hybrid printer upto 10 feet - Backlit Profile
LEDs / Driver / SMPS	Edge LED bars on side profiles, SMPS - 100W,150W, 200W, 300W
Warranty	2 year warranty
Input / Output Voltage	240 VAC / 12V DC output from SMPS
Power Consumption	10-13W / sq.ft
Brightness	Lux Range - 800-900 @ print surface



Website : www.nsenterprises.in
Mail : n.s.enterprises2012@gmail.com

Mob: +91-9004282786
+91-9322447403



Pillar Wrap (Column)

Pillar Profile - 100mm

COMPATIBLE WITH WALL LITE 75mm |
BACKLIT | SINGLE SIDE | WALL MOUNT



The new pillar frame helps to cover the entire rectangular pillar with backlit or frontlit visuals. It is a clever combination of two profiles to avoid the blank area on the corners of the two frames placed on two sides of the pillar



Product Specifications

Profile	Niche frame / y frame / h frame - 35mm
Finish	Silver Anodised / Black/ white powder coating. Can be customised to RAL Colour
Fabric/Textile	PU coated Polyester BacklitFabric 160GSM with Silicone/PVC strip
Printing	UV printing Roll-to-Roll / Hybrid printer upto 10 feet - Backlit Profile
LEDs / Driver / SMPS	Edge LED bars on side profiles, SMPS - 100W,150W, 200W, 300W
Warranty	2 year warranty
Input / Output Voltage	240 VAC / 12V DC output from SMPS
Power Consumption	10-13W / sq.ft
Brightness	Lux Range - 1000-1100 @ print surface



Website : www.nsenterprises.in
Mail : n.s.enterprises2012@gmail.com

Mob: +91-9004282786
+91-9322447403



Website : www.nsenterprises.in
Mail : n.s.enterprises2012@gmail.com

Mob: +91-9004282786
+91-9322447403

Shopfitting Lightbox

Double Groove Slotted 75mm

SHOPFITTING + LIGHTBOX | BACKLIT |
SINGLE SIDE

The concept of a BACKLIT FABRIC LIGHTBOX + SHOPFITTING is a sleek and unique combination of modern retail branding application.



Product Specifications

Profile	Double Groove Slotted 75mm Profile
Finish	Silver Anodised / Black/ white powder coating. Can be customised to RAL Colour
Fabric/Textile	PU coated Polyester BacklitFabric 160GSM with Silicone/PVC strip
Printing	UV printing Roll-to-Roll / Hybrid printer upto 10 feet - Backlit Profile
LEDs / Driver / SMPS	Edge LED bars on side profiles, SMPS - 100W,150W, 200W, 300W
Warranty	2 year warranty
Input / Output Voltage	240 VAC / 12V DC output from SMPS
Power Consumption	10-13W / sq.ft
Brightness	Lux Range - 1000-1100 @ print surface



Website : www.nsenterprises.in
Mail : n.s.enterprises2012@gmail.com

Mob: +91-9004282786
+91-9322447403



Fabric Lightbox

Shelf on the lightbox

Merchandise on U-bar

Border Frame

1" Border Frame 75mm

1" BORDER | BACKLIT | SINGLE SIDE |
VARIOUS COLOUR FINISHED

The border frame has a 1" border on the front for aesthetic look for museums, art frames, art galleries and other decorative ideas. The fabric is fixed a 10mm inside the surface of the frame.



Product Specifications

Profile	1" Border Profile 75mm
Finish	Silver Anodised / Black/ white powder coating. Can be customised to RAL Colour
Fabric/Textile	PU coated Polyester BacklitFabric 160GSM with Silicone/PVC strip
Printing	UV printing Roll-to-Roll / Hybrid printer upto 10 feet - Backlit Profile
LEDs / Driver / SMPS	Edge LED bars on side profiles, SMPS - 100W,150W, 200W, 300W
Warranty	2 year warranty
Input / Output Voltage	240 VAC / 12V DC output from SMPS
Power Consumption	10-13W / sq.ft
Brightness	Lux Range - 1000-1100 @ print surface



Website : www.nsenterprises.in
Mail : n.s.enterprises2012@gmail.com

Mob: +91-9004282786
+91-9322447403



Rounded Edge Frame

50mm / 75mm/ 100mm / 120mm

20mm RADIUS ROUNDED EDGE FRAME |
BACKLIT | SINGLE SIDE

A special curved profile is designed for all the fabric lightbox to avoid sharp edges and corners of the lightbox. It is best used in high footfall areas like airports, metro stations, malls and trade show areas.



Rounded Corner after fabric is fixed.

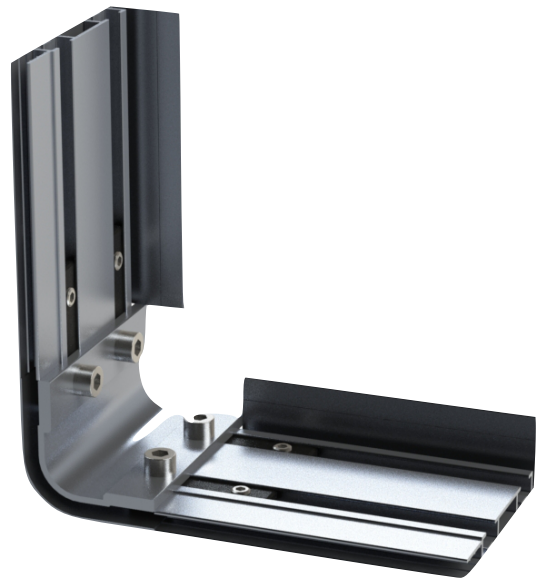
Product Specifications

Profile	20mm Curve Edge Lightbox
Finish	Silver Anodised / Black/ white powder coating. Can be customised to RAL Colour
Fabric/Textile	PU coated Polyester BacklitFabric 160GSM with Silicone/PVC strip
Printing	UV printing Roll-to-Roll / Hybrid printer upto 10 feet - Backlit Profile
LEDs / Driver / SMPS	Edge LED bars on side profiles, SMPS - 100W,150W, 200W, 300W
Warranty	2 year warranty
Input / Output Voltage	240 VAC / 12V DC output from SMPS
Power Consumption	10-13W / sq.ft
Brightness	Lux Range - 1000-1100 @ print surface

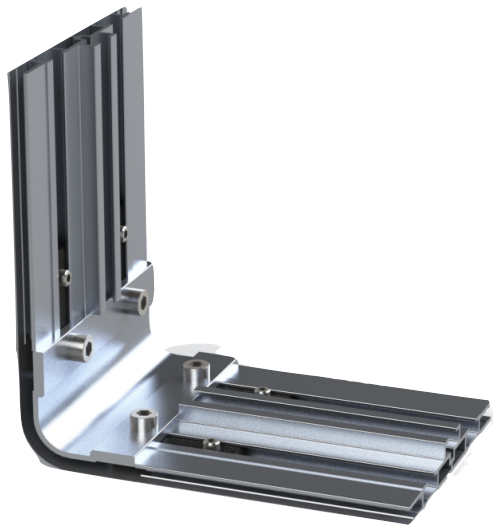




Rounded Corner with Wall
Frame 50mm Profile



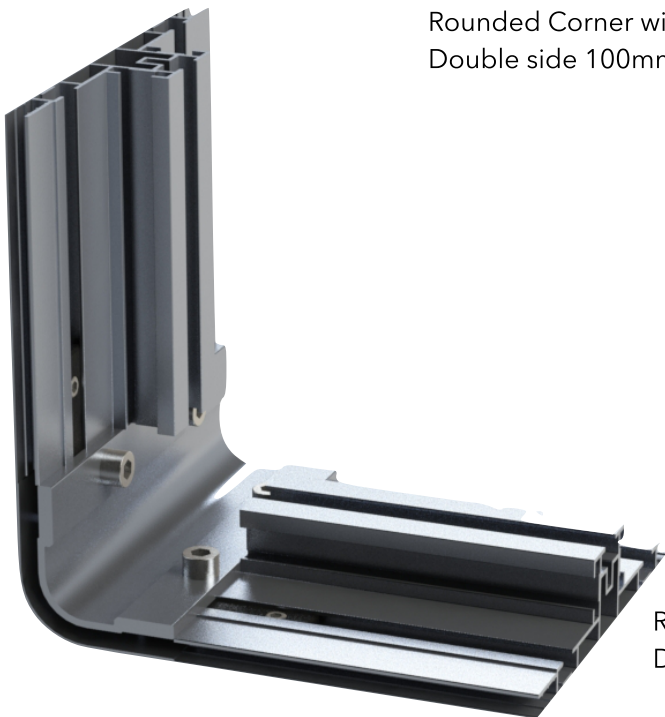
Rounded Corner with Wall
Frame 75mm Profile



Rounded Corner with
Double side 100mm Profile



Rounded Corner with Wall
Frame 100mm Profile



Rounded Corner with
Double side 120mm Profile